

Power of KMTC

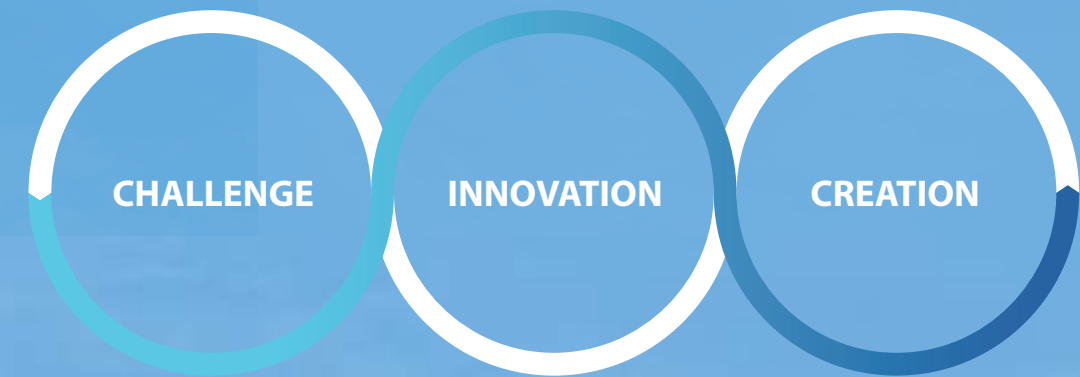
*You will be fully satisfied with KMTC's Specialized High Quality Service.
Punctual and Reliable Schedule Powerful Computer System and Network
Highly Qualified Staffs and Management*

Your Reliable Partner



LEADING IN A NEW ERA

With more than 60 years of full liner service logistics knowledge, KMTC is continuously providing top quality services and is steadily building its vessel fleets to enlarge its service boundaries to fully satisfy customer's needs. All employees of KMTC will always keep KMTC Way, our code of conduct, in mind and execute them to develop and advance with our valuable customers towards Global KMTC, a great 100-year company.



We never stop challenging ourselves to reach the higher places to provide the better services than you expect.

Innovative Thought, Innovative Processes, Innovative Service. We know too well that only innovation can prepare us for the better service beyond the expectation of customers.

We know very well that only the creative thinking is the key to the best service.



CONTENTS 04 History of KMTC 08 Our Performance 10 Business Areas (Korea / Japan / China / Southeast Asia / Southwest Asia / Middle East, Africa / Russia) 16 KMTC Service Map 18 Operation Fleet List 20 Growth & Development 22 Organization 23 Affiliated Companies

HISTORY OF KMTC

To grow in a sustainable global enterprise
 One foot ahead of the challenges and constant innovation
 Creating a new way, we will create the future.



- 1954** Apr. Establishment of Korea Marine Transport Co., Ltd.
Apr. Commenced Korea-Japan liner and tramp service
- 1964** Feb. Launch of M/V Dongyang and M/V Shinyang as the first vessels built by Korean Government's Shipbuilding Program
- 1967** Apr. Operated semi-container ships for the first time in Korea

1954-1979

- 1970** Aug. Awarded the Presidential commendation
- 1972** Jul. Commenced tramp service from/to Southeast Asia
- 1973** Jun. Commenced full container liner service between Korea-Japan for the first time in Korean shipping industry
- 1975** Feb. Commenced worldwide tramp service
- 1977** Mar. Awarded the Iron Tower Order of Industrial Service Merit on Trade Day
- 1979** Mar. Awarded the Silver Tower Order of Industrial Service Merit on Trade Day



- 1981** May Contracted COA for coal transport with KEPCO (Korea Electric Power Corp.)
- 1983** Aug. Established Soyang Shipping Co., Ltd. (General Agent for NYK Line)
- 1985** Sep. Established New KMTC re-foundation (by the Government's shipping rationalization program)
- 1988** Nov. Started Air Cargo Agent business

1980-1999

- 1990** Apr. Established Camellia Line Co., Ltd. with NYK
Sep. Established Korea Ferry Co., Ltd. as General Agent of Camellia Line
- 1992** Feb. Established KMTC Air-Sea Service Ltd.
Aug. Started full container liner service at Ulsan Port for the first time
Nov. Opened Korea/Taiwan/Hong Kong route
- 1994** Feb. Commenced Korea/China Container Liner Service
Mar. Awarded the Silver Tower Order of Industrial Service Merit on Trade Day
- 1996** May Commenced Korea/Singapore/Malaysia Service
- 1998** Apr. Acquired certificates of ISM CODE and ISO 9002
Dec. Awarded Korea Logistics Award with Presidential commendation





- 2000** May Awarded the Iron Tower Order of Industrial Service Merit on Trade Day
- Dec. Awarded 'the Best Shipping Company in the Near-Sea Transportation Service'
- 2004** Feb. Commenced Liner Service from/to Incheon/Shanghai, Ningbo
- 2005** Nov. Commenced Direct Service to Dubai

2000-2010

- 2006** Nov. Acquired 'Certified Integrated Logistics Company' by the Korean Government
- Nov. Awarded the Tower of US 200mil. Export in commemoration of the 43rd Annual Trade day
- Dec. Commenced Vladivostok/Vostochny Service
- 2008** Mar. Commenced Pakistan and Iran Liner Service
- Dec. Awarded the Tower of US 300mil. Export in commemoration of the 45rd Annual Trade day
- 2009** Apr. Acquired AEO, Authorized Economic Operator, Certificate
- Oct. Christened 'M/V KMTC INCHEON' 1,676 TEU
- 2010** Apr. Established Total Harbor Service for Arranging entry and clearance of vessels
- May Christened 'M/V KMTC QINGDAO' 2,826 TEU



2011-Current

- 2011** Jan. Established KMTC SM (Ship and Crew Management Company)
- Dec. Selected for transporting the most volume in Incheon Port (awarded for 2 consecutive years)
- 2012** Jan. Busan New Container Terminal 2-3 step has been opened
- Jan. Acquired AA grade of the AEO, Authorized Economic Operator, Certificate
- 2013** Feb. Christened 'M/V KMTC NINGBO' 2,800 TEU
- May Christened 'M/V KMTC SHENZHEN' 2,800 TEU
- 2014** Jun. Christened 'M/V KMTC MUMBAI' 5,400 TEU
- Dec. Awarded the Tower of US 400mil. Export in commemoration of 51th Annual Trade day
- Dec. The 21st Korean Innovation Frontier Award, Prime Minister's Award
- 2015** May Christened 'M/V KMTC DUBAI' 5,400 TEU
- May Maintained AA grade of the AEO
- Dec. Awarded the Bronze Tower Order of Industrial Service Merits on Trade day
- Dec. Awarded the Tower of US 500mil. Export in commemoration of 52nd Annual Trade day
- 2016** Dec. Christened 'M/V KMTC CHENNAI' 4,300 TEU
- 2017** Jan. Christened 'M/V KMTC NHAVA SHEVA' 4,300 TEU
- Jan. Christened 'M/V KMTC JEBEL ALI' 4,300 TEU
- Feb. Christened 'M/V KMTC MANILA' 4,300 TEU
- 2019** May Christened 'M/V SUNNY DAHLIA' 700 TEU
- 2020** Apr. Christened 'M/V M/V KMTC MUNDRA' 6,500 TEU
- Jun. Christened 'M/V KMTC SEOUL' 2,500 TEU
- Sep. Christened 'M/V KMTC COLOMBO' 6,500 TEU
- Dec. Established KM Cargo Services Sdn. Bhd. (Off-Dock CY, Malaysia)
- 2021** Jun. Christened 'M/V KMTC DELHI' 6,500 TEU
- May Acquired Certified Excellent Shipping Company and Shipper
- Jun. Commenced Mombasa Far East Express Service (MFX)
- Jul. Established KM Cargo Services Hai Phong Co., Ltd. (Off-Dock CY)
- 2022** Jun. Launched 'New eKMTC Service'
- Jun. Released 'KMTC Mobile App'



OUR PERFORMANCE

CHANGES TO COMPETE WITH THE WORLD AND INNOVATION, KMTC IS AT THE CENTER

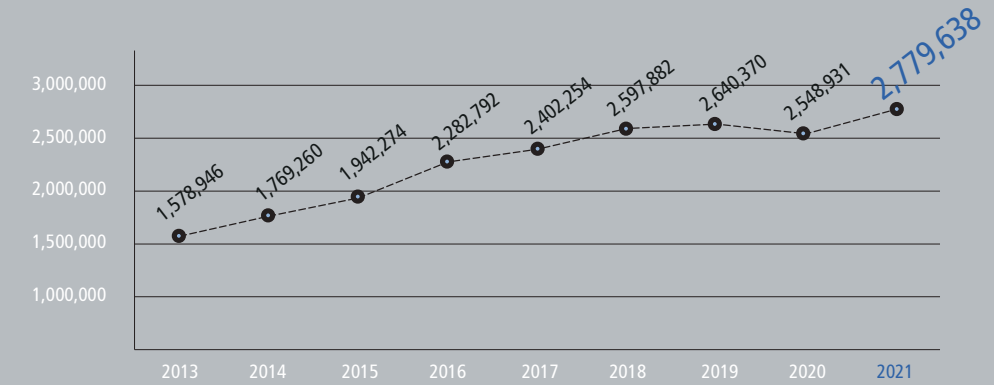
1 Intra-Asia's leading carrier growing to 3 million TEUs in cargo volume

KMTC have placed considerable efforts to satisfy our customers through additional routes and high service quality. In 2022, we have the No.1 market share in Korea-Japan service and Southeast Asia service market, connecting more than 90 international ports and terminals in 25 countries.



Lifting Volume

(Unit : TEU)



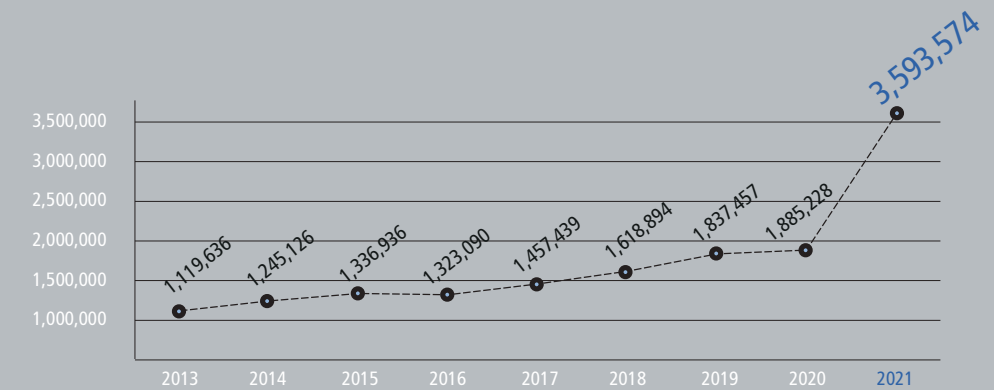
2 Moving forward as a 100-year company through qualitative growth as well as external growth

KMTC achieved a surplus for 37 consecutive years through 2021, an unprecedented worldwide record. We have maintained a good level of profitability and consistently strong capital strength with low financial leverage.



Sales

(Unit : million won)



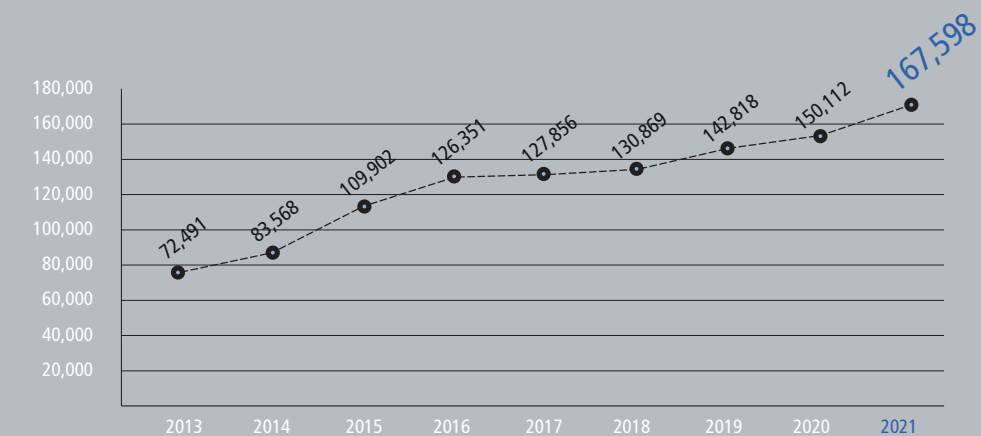
3 Ranked 15th in the world's top 100 container liners

KMTC has obtained more vessels to respond to drastic surge in the container volume of the regional economy. Starting with delivery of large-scale vessels from 2010, KMTC is operation a total of 65 vessels at the end of 2021 with 27 own vessels, 38 chartered vessels.



Operated Fleets Alphaliner

(Unit : TEU)



(Source : Alphaliner as of Dec.)

BUSINESS AREAS

KOREA SERVICE



CALLING PORTS

- | | |
|----------------|------------|
| Busan | Kwangyang |
| Busan New Port | Daesan |
| Incheon | Pyeongtaek |
| Ulsan | Pohang |



JAPAN SERVICE



CALLING PORTS

- | | | |
|-------------|-------------|---------------|
| Akita | Kobe | Sakata |
| Chiba | Kumamoto | Satsumasendai |
| Fukuyama | Kushiro | Sendai Miyagi |
| Hachinohe | Maizuru | Shibushi |
| Hakata | Matsuyama | Shimizu |
| Hiroshima | Mizushima | Takamatsu |
| Hitachinaka | Moji | Tokushima |
| Hososhima | Muroran | Tokuyama |
| Imabari | Nagasaki | Tokyo |
| Imari | Nagoya | Tomakomai |
| Ishikari | Naoetsu | Toyamashinko |
| Iwakuni | Niigata | Toyohashi |
| Iyomishima | Oita | Tsuruga |
| Kamaishi | Onahama | Yatsushiro |
| Kanazawa | Osaka | Yokkaichi |
| Kawasaki | Sakaiminato | Yokohama |



CHINA SERVICE



CALLING PORTS

○ NORTH CHINA

Shanghai	Xingang	Taicang
Ningbo	Dalian	Zhangjiagang
Qingdao	Lianyungang	Zhoushan

○ SOUTH CHINA

Shekou	Dachanbay	Nansha
Huangpu	Fuqing	Shantou
Xiamen		



HONG KONG

CALLING PORTS



TAIWAN

CALLING PORTS



SOUTHEAST ASIA SERVICE



CALLING PORTS

SINGAPORE



INDONESIA



THAILAND



MALAYSIA



PHILIPPINES



VIETNAM



SOUTHWEST ASIA SERVICE



CALLING PORTS

INDIA



PAKISTAN



SRI LANKA



MIDDLE EAST / AFRICA SERVICE



CALLING PORTS

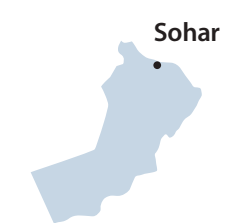
UNITED ARAB EMIRATES



SAUDI ARABIA



OMAN



KENYA



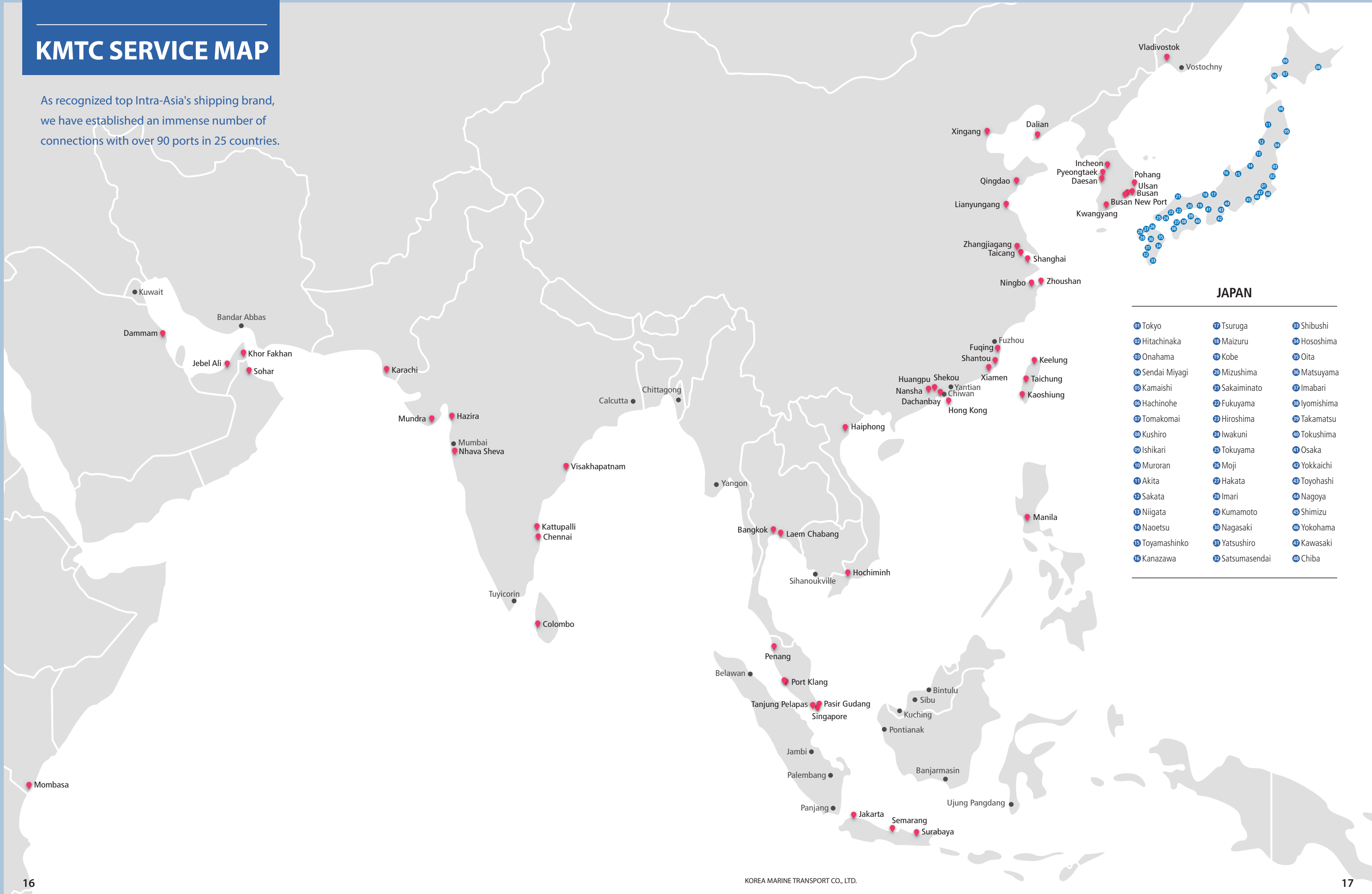
RUSSIA SERVICE

CALLING PORTS



KMTC SERVICE MAP

As recognized top Intra-Asia's shipping brand, we have established an immense number of connections with over 90 ports in 25 countries.

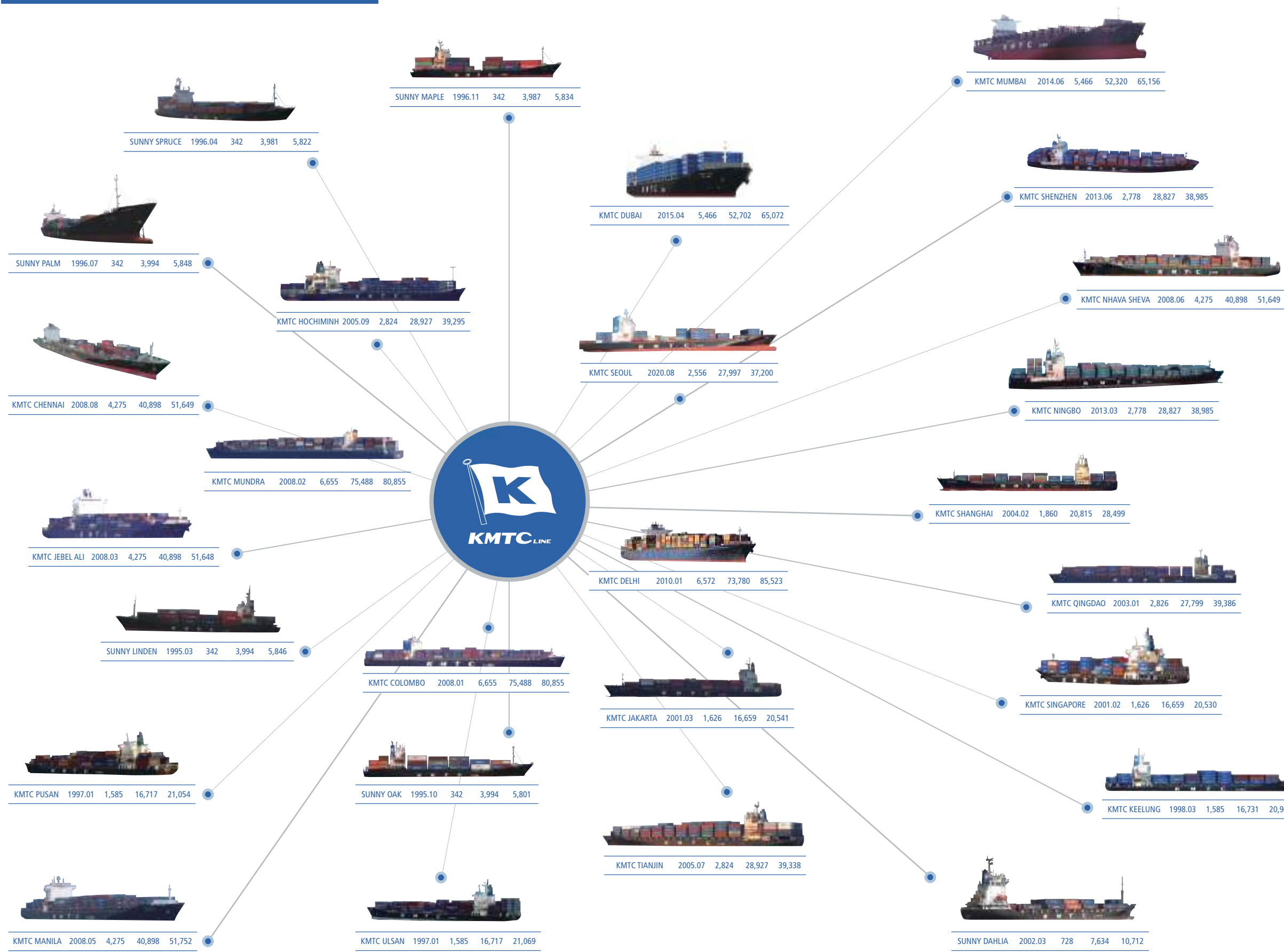


JAPAN

- | | | |
|------------------|------------------|---------------|
| 01 Tokyo | 17 Tsuruga | 33 Shibushi |
| 02 Hitachinaka | 18 Maizuru | 34 Hososhima |
| 03 Onahama | 19 Kobe | 35 Oita |
| 04 Sendai Miyagi | 20 Mizushima | 36 Matsuyama |
| 05 Kamaishi | 21 Sakaiminato | 37 Imabari |
| 06 Hachinohe | 22 Fukuyama | 38 Iyomishima |
| 07 Tomakomai | 23 Hiroshima | 39 Takamatsu |
| 08 Kushiro | 24 Iwakuni | 40 Tokushima |
| 09 Ishikari | 25 Tokuyama | 41 Osaka |
| 10 Muroan | 26 Moji | 42 Yokkaichi |
| 11 Akita | 27 Hakata | 43 Toyohashi |
| 12 Sakata | 28 Imari | 44 Nagoya |
| 13 Niigata | 29 Kumamoto | 45 Shimizu |
| 14 Naoetsu | 30 Nagasaki | 46 Yokohama |
| 15 Toyamashinko | 31 Yatsushiro | 47 Kawasaki |
| 16 Kanazawa | 32 Satsumasendai | 48 Chiba |

OPERATION FLEET LIST

MARK Vessel Name BUILT TEU GRT DWT



OWNED VESSEL

Vessel Name	TEU	GRT	DWT	BUILT
SUNNY LINDEN	342	3,994	5,846	1995.03
SUNNY OAK	342	3,994	5,801	1995.10
SUNNY SPRUCE	342	3,981	5,822	1996.04
SUNNY PALM	342	3,994	5,848	1996.07
SUNNY MAPLE	342	3,987	5,834	1996.11
SUNNY DAHLIA	728	7,634	10,712	2002.03
KMTC PUSAN	1,585	16,717	21,054	1997.01
KMTC ULSAN	1,585	16,717	21,069	1997.01
KMTC KEELUNG	1,585	16,731	20,962	1998.03
KMTC SINGAPORE	1,626	16,659	20,530	2001.02
KMTC JAKARTA	1,626	16,659	20,541	2001.03
KMTC QINGDAO	2,826	27,799	39,386	2003.01
KMTC SHANGHAI	1,860	20,815	28,499	2004.02
KMTC TIANJIN	2,824	28,927	39,338	2005.07
KMTC HOCHIMINH	2,824	28,927	39,295	2005.09
KMTC COLOMBO	6,655	75,488	80,855	2008.02
KMTC MUNDRA	6,655	75,488	80,855	2008.02
KMTC JEBEL ALI	4,275	40,898	51,648	2008.03
KMTC MANILA	4,275	40,898	51,752	2008.05
KMTC NHAVA SHEVA	4,275	40,898	51,649	2008.06
KMTC CHENNAI	4,275	40,898	51,649	2008.08
KMTC DELHI	6,572	73,780	85,523	2010.01
KMTC NINGBO	2,778	28,827	38,985	2013.03
KMTC SHENZHEN	2,778	28,827	38,985	2013.06
KMTC MUMBAI	5,466	52,320	65,156	2014.06
KMTC DUBAI	5,466	52,702	65,072	2015.04
KMTC SEOUL	2,556	27,997	37,200	2020.08
TOTAL	76,805	796,556	989,865	

CHARTERED VESSEL

Vessel Name	TEU	GRT	DWT	BUILT
SUNNY LOTUS	1,048	9,910	12,581	2013.04
SUNNY IVY	1,096	9,528	11,799	2021.03
SUNNY ACACIA	1,000	9,867	12,500	2015.03
SUNNY CLOVER	1,000	9,865	12,419	2016.02
SUNNY DAISY	1,000	9,867	12,300	2014.12
SUNNY LAUREL	1,000	9,870	12,500	2018.03
SUNNY CANNA	1,000	9,870	12,470	2018.01
SUNNY ROSE	1,000	9,865	12,500	2015.09
SUNNY LAVENDER	1,000	9,865	12,419	2016.06
SUNNY COSMOS	1,009	9,988	12,248	2014.04
SUNNY LILY	1,009	9,988	12,248	2014.04
SUNNY IRIS	1,048	9,910	12,400	2013.11
SUNNY FREESIA	1,096	9,527	11,600	2019.05
SUNNY CAMELLIA	1,103	9,563	11,775	2015.03
SUNNY CALLA	1,103	9,563	11,650	2015.01
KMTC BANGKOK	1,770	18,318	21,800	2016.11
KMTC LAEM CHABANG	1,770	18,318	21,800	2017.02
KMTC TAIPEIS	1,804	18,370	21,741	2017.04
KMTC OSAKA	1,809	17,853	22,444	2019.03
KMTC GWANGYANG	1,809	17,933	22,397	2019.06
KMTC INCHEON	1,809	17,933	22,387	2019.06
KMTC NAGOYA	1,809	17,933	22,401	2019.05
KMTC POHANG	1,809	17,933	22,386	2019.07
KMTC TOKYO	1,809	17,853	22,444	2019.02
KMTC HAIPHONG	1,822	18,370	21,737	2017.06
HAPPY LUCKY	2,553	27,104	33,406	2008.02
KMTC DALIAN	2,556	27,997	37,200	2020.11
KMTC SHIMIZU	2,556	27,997	37,200	2020.11
KMTC XIAMEN	2,556	27,997	37,200	2020.10
KMTC YOKOHAMA	2,556	27,997	37,200	2020.09
KMTC PENANG	2,806	28,736	34,285	2018.05
KMTC SURABAYA	2,806	28,736	34,285	2018.04
HAKATA SEOUL	8,540	87,697	90,488	2010.08
DONGJIN FORTUNE	728	7,683	10,705	2002.08
RELIANCE	855	9,141	10,004	1999.09
VASI MOON	1,679	16,850	21,614	2000.07
EMORA	1,794	21,018	25,748	2007.09
DALIAN	4,253	40,030	50,795	2009.12
TOTAL	69,770	706,843	865,076	

※ As of July, 2022

GROWTH & DEVELOPMENT

CERTIFICATIONS



1 ISO 9001 certificate

The quality management system of KMTC has been found to be compliant with the requirements of the ISO quality management system standards. Accordingly, we, KMTC, obtained "Certificate of Approval" for ISO 9002 from Korean Register of Shipping in 1998 and it was renewed two times in May 2001 and 2004.



2 ISM CODE certificate

The safety management system of KMTC has been found to be in compliance with the requirements of the International Management Code for the Safe Operation of ships and for Pollution Prevention (ISM CODE) which was adapted by the International Maritime Organization.



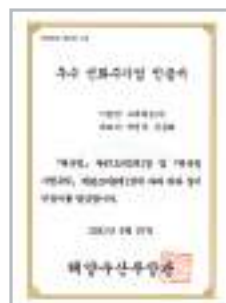
3 ISPS CODE certificate

ISPS CODE adapted by the International Maritime Organization was effective with force from July, 2004 for security reasons of international ships and port facilities. Accordingly, we, KMTC designated key staffs, Company Security Officer(CSO) and Ship Security Officer(SSO), and successfully obtained "International Ship Security Certificate(ISSC)" on each vessels.



4 KOREA AEO certificate

AEO stands for "Authorized Economic Operator", and an AEO means a company that the Korea Customs Service has officially certified as an excellent business entity after examining its suitability as such in accordance with the authorization criteria of legal compliance, internal control system, financial solvency and security management.



5 Certified Excellent Shipping Company and Shipper

The system to promote continuous win-win cooperation between Shipping Company and Shipper is insufficient, and the lack of fair trade elements during transportation leads to unfair trade practices such as dumping. Therefore, it is necessary to eradicate unfair trade practices between Shipping Company and Shipper and promote win-win cooperation. In order to induce fair trade, the Ministry of Oceans and Fisheries has introduced "Certified Excellent Shipping Company and Shipper" to provide win-win and fair trade for companies that meet the target requirements. KMTC obtained the certification based on our active win-win cooperation with shippers.

AWARDS



• Order of Industrial Service Merits / Export Tower Prize

- 2015 Dec. Bronze Tower Order of Industrial Service Merits on Trade day [Government of the Republic of Korea]
- 2015 Dec. 'The Tower of 500 million US Dollars Export' in commemoration of the 52nd Annual Trade day
- 2014 Dec. 'The Tower of 400 million US Dollars Export' in commemoration of the 51st Annual Trade day

• Prime Minister's Award & Minister's Award

- 2020 Dec. Participating VSR(Vessel Speed Reduction) Program [Ministry of Oceans and Fisheries]
- 2014 Dec. The 21st Korean Innovation Frontier Award, Prime Minister's Award [Ministry of Trade, Industry and Energy]
- 2014 Aug. Korea Digital Management Innovation Awards [Ministry of Science and ICT]
- 2013 Dec. Contribution to Incheon Port Development [Ministry of Oceans and Fisheries / Incheon Port Authority, IPA]
- 2013 Jun. Two Gold Medals in National Dragon Boat & Canoe Competition [Ministry of Oceans and Fisheries]

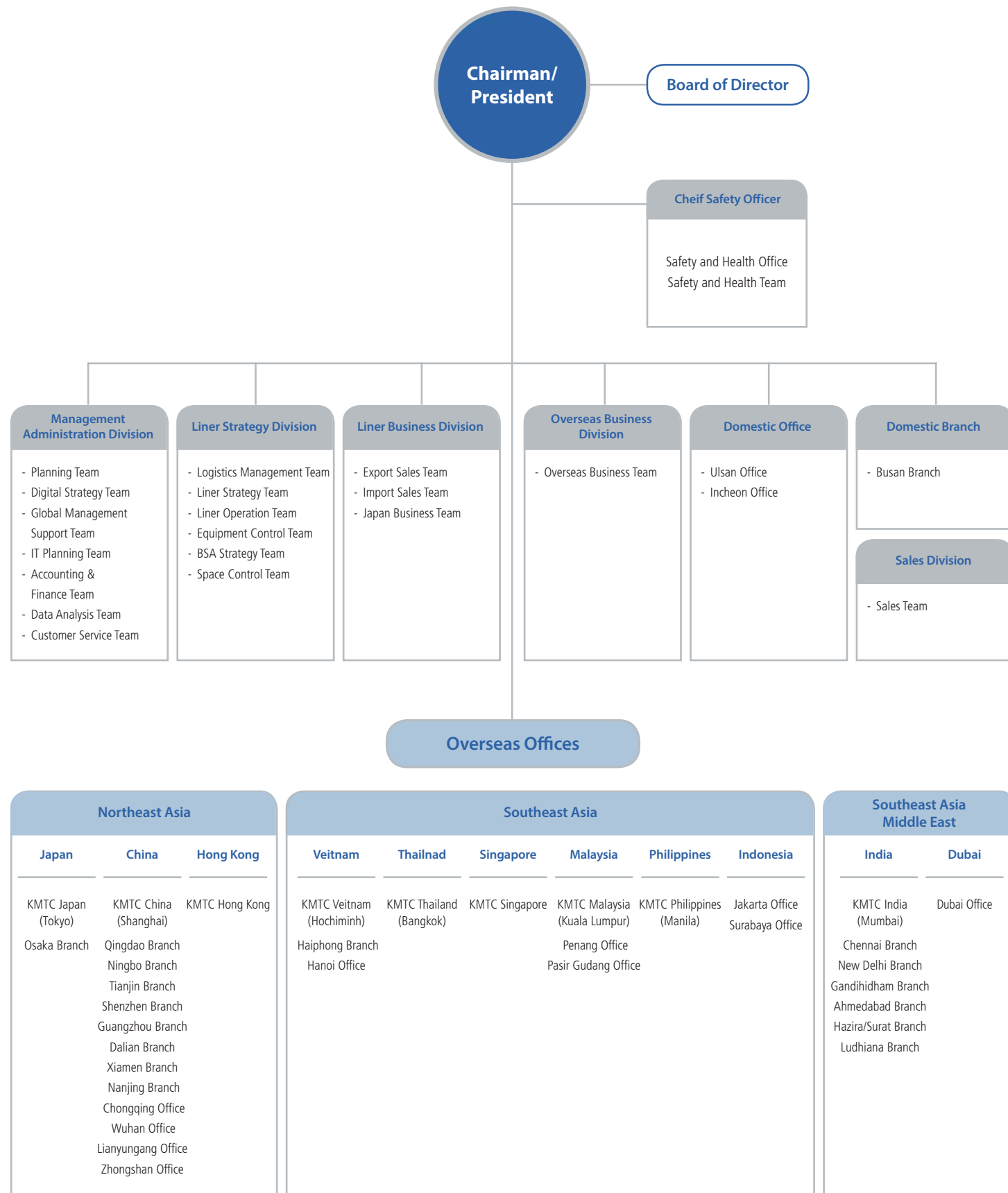
• Award etc.

- 2021 Excellent Shipping Company of Participating VSR(Vessel Speed Reduction) Program [Busan Port Authority, BPA / Incheon Port Authority, IPA / Ulsan Port Authority, UPA / Yeosu Gwangyang Port Authority, YGPA]
- 2021 Dec. Excellence Award at the Contest of Excellent Cases of Cooperation between Shipping Company and Shipper [Korea Ocean Business Corporation]
- 2019 Dec. Incheon Logistics Development Award Grand Prize [Incheon Metropolitan City]
- 2015 Dec. CEO of the Year 2015 [Korea Economic Daily]
- 2015 Apr. Global Leader of Korea 2015 [Maeil Economic Daily]
- 2014 Dec. CEO of the Year 2014 [Korea Economic Daily]
- 2014 Feb. Korea Shipping and Logistics Award [Korea Shipping and Logistics Association]
- 2013 Oct. Weather Management Certification [Korea Meteorological Administration]
- 2013 May Korea Logistics Award Grand Prize [Korea Logistics Association]
- 2011 Jan. Commendation on the 29th International Customs Day [Korea Customs Service]
- 2010 Dec. Person of the Year [Korea Maritime Press]
- 2010 Jun. Maritime Safety Excellence Company [Korean Register]

• Plaque of appreciation

- 2022, 2021, 2013, 2011, 2008 Busan Port Development [Busan Port Authority, BPA]
- 2011, 2010, 2009, 2008 Incheon Port Development [Incheon Port Authority, IPA]
- 2017 Yeongil Port Development [Pohang City]
- 2014 Dec. Sponsoring [Incheon National Maritime High School]
- 2011 Jan. Sponsoring [Korea Maritime and Ocean University]

ORGANIZATION



AFFILIATED COMPANIES



KMTC AIR-SEA SERVICE LTD.

16th Fl., Yuhwa Securities Bldg., 36 Gukjegeumyung-ro 2-gil, Yeongdeungpo-gu, Seoul, Korea
TEL 82-2-788-9500 FAX 82-2-785-4502



KOREA FERRY CO., LTD.

4th Fl., International Passenger Terminal, 206 Chungang-daero, Dong-gu, Busan, Korea
TEL 82-51-1688-7447 FAX 82-2-6670-0971



TOTAL HARBOR SERVICE CO., LTD.

10th Fl., Pan Ocean Bldg., 102 Jungang-daero, Jung-gu, Busan, Korea
TEL 82-51-797-7409 FAX 82-51-980-0503



TOTAL DOCUMENT SERVICE CO., LTD.

9th Fl., Pan Ocean Bldg., 102 Jungang-daero, Jung-gu, Busan, Korea
TEL 82-51-797-7420 FAX 82-51-980-0503



KMTC (JAPAN) CO., LTD.

4th Fl., Nihonseimei Shinbashi Bldg., No.18-16, 1-Chome, Shinbashi, Minatoku, Tokyo, Japan
TEL 81-3-3500-5074 FAX 81-3-3500-5095



KMTC (HK) CO., LTD.

Unit 2502-04, 25th Fl., Manhattan Place, 23 Wang Tai Road, Kowloon Bay, Kowloon, Hong Kong
TEL 852-2851-9638, 852-2851-9675 FAX 852-2850-6569



KMTC LINE (MALAYSIA) SDN. BHD.

Suite P2.02, Level P2, Menara Trend, Intan Millennium Square, No 68, Jln Batai Laut 4, Taman Intan, 41300 Klang, Selangor Darul Ehsan, Malaysia
TEL 60-3-3342-8386 FAX 60-3-3342-9951



KMTC (THAILAND) CO., LTD.

8th Fl., Vibulthani Tower 1, Rama 4 RD., Klongton, Klongtoey Bangkok, Thailand
TEL 66-2-120-9512 FAX 66-2-120-9555



KMTC SHIP MANAGEMENT CO., LTD.

11th Fl., 7 Chungang-daero, Jung-gu, Busan, Korea
TEL 82-51-790-2400 FAX 82-51-790-2488



HANA SHIPPING CO., LTD.

Room No. 905, Eunsan Bay Bldg., 88 Jungang-daero, Jung-gu, Busan, Korea
TEL 82-51-714-4184 FAX 82-51-714-6198



TOTAL MARINE AND MARKETING SERVICE CO., LTD.

Room No. 706, Eunsan Bay Bldg., 88 Jungang-daero, Jung-gu, Busan, Korea
TEL 82-51-797-7404 FAX 82-51-980-0503



CAMELLIA LINE CO., LTD.

3rd Fl., Hakata Port International Terminal 1401, Okihama-Machi Hakata-ku, Fukuoka, Japan
TEL 81-92-262-2323 FAX 81-92-262-2332



KOREA MARINE TRANSPORT (CHINA) CO., LTD.

Room 901/902, Chengtuo Holding Bldg., 130 Wu Song Road, Shanghai, China
TEL 86-21-6309-2239 FAX 86-21-6309-6108



KMTC (SINGAPORE) PTE. LTD.

200 Cantonment Road, #16-02A, Southpoint, Singapore
TEL 65-6220-8558 FAX 65-6220-9115



KMTC (VIETNAM) CO., LTD.

Suite 1401, 14th Fl., Melinh Point Tower, 02 Ngo Duc Ke Street, Ben Nghe Ward, District 1, Hochiminh City, Vietnam
TEL 84-8-3824-6110 FAX 84-8-3824-6117



KMTC PHILIPPINES CORPORATION

9th Fl., Times Plaza Bldg., U.N. Ave. Cor. Taft Ave., Ermita, Manila, Philippines
TEL 63-2-354-0940 FAX 63-2-353-1877



KMTC (INDIA) PVT. LTD.

One International Center, Tower 3, 22nd Fl., 2202, Senapati Bapat Marg, Elphinstone Road(West), Mumbai-400013, Maharashtra, India
TEL 91-22-4922-2555 FAX 91-22-4922-2551